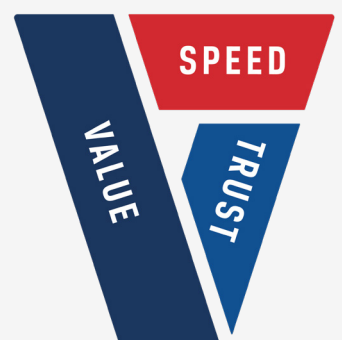




Local Information

*including Hotels, Restaurants, Shopping,
Local Attractions and Car Hire information*

DAIMLER TRUCKS MILPERRA



Contents

| | |
|----------------------------|---------|
| Hotels | Page 2 |
| Restaurants | Page 4 |
| Shopping | Page 7 |
| Local Attractions | Page 9 |
| Car Hire Information | Page 10 |

Hotels

The Mill Hotel

The Mill Hotel combines great food, friendly service and a relaxed atmosphere for the perfect bistro dining experience or celebration. For the best lunch & dinner options near you, our bistro menu provides a variety of delicious traditional local pub food and drinks, while simultaneously offering premium accommodation and function rooms for any event. Contact The Mill Hotel today!



189 Beaconsfield Street. Milperra
Local pick up may be available on request
Reservations 02 9771 2722
info@millhotel.com.au

The Palms Hotel

Whether you are travelling on business, leisure or attending a special celebration, stay the night at Palms Hotel. All rooms have been freshly renovated and are spacious, clean and comfortable. All rooms are air-conditioned, have new HD flat screen TV and tea & coffee making facilities. Palms Hotel is an iconic entertainment venue conveniently and centrally located on one of Sydney's major arterial roads, within proximity to popular landmarks such as Sydney Olympic Park, Flemington markets, Bankstown Central shopping centre and the South-West of Sydney central business district.



167 Hume Highway, Chullora
Local pick up may be available on request
Reservations 02 9642 7300

Mercure Sydney Liverpool

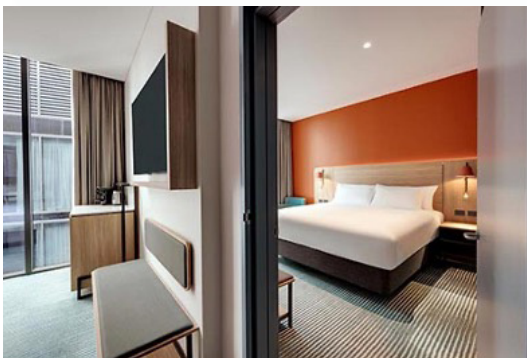
Whether visiting Liverpool for business or pleasure, you will find the Mercure Sydney Liverpool to be one of the best-equipped hotels in the Liverpool and Sydney area. Enjoy amenities ranging from an outdoor swimming pool, well-equipped gym, and a business centre to the Atrium Restaurant and a coffee shop to exceptional facilities for meetings and social gatherings!



424 – 458 Hoxton Park Road, Prestons
Local pick up may be available on request
Reservations 02 8777 0600
reservations@mercuresydneyliverpool.com.au

Travelodge Hotel Hurstville Sydney

Travelodge Hotel Hurstville Sydney is a brand-new hotel, happy to call the Hurstville community home. The combination of shopping, events, a melting pot of international cuisines, and plenty of opportunities to get back to nature is what makes Hurstville a great area to stay in. The hotel's prime location in the town centre is ideal for those looking to explore the local neighbourhood. Direct connections to Sydney Airport, the Sydney CBD and Wollongong are easily accessed for travellers ready to adventure across.



6-8 Cross Street, Hurstville
Local pick up may be available on request
Reservations 02 9171 2555

As a valued customer of Daimler Trucks Milperra, we are offering free transportation to your choice of the hotels in the booklet.

Please see reception to organise transport.

Restaurants

There is a large array of local restaurants/cafes in the surrounding area.
Transportation available on request - see reception to organise (subject to availability).

Frankie's Food Factory

Shop 5/479 Henry Lawson Drive, Milperra
(02) 9899 2299
frankiesfoodfactory.com.au

Cafe - Restaurant
Dine-in • Takeaway • Delivery

| | |
|-----------|-----------------|
| Monday | 8:00am - 4:00pm |
| Tuesday | 8:00am - 4:00pm |
| Wednesday | 8:00am - 4:00pm |
| Thursday | 8:00am - 4:00pm |
| Friday | 8:00am - 4:00pm |
| Saturday | 8:00am - 5:00pm |
| Sunday | 8:00am - 5:00pm |

The Mill Hotel

189 Beaconsfield Street, Milperra
(02) 9771 2722
millhotel.com.au

Bistro - Pub
Dine-in • Takeaway

| | |
|-----------|-------------------|
| Monday | 10:00am - 3:00am |
| Tuesday | 10:00am - 3:00am |
| Wednesday | 10:00am - 3:00am |
| Thursday | 10:00am - 3:00am |
| Friday | 10:00am - 3:00am |
| Saturday | 10:00am - 3:00am |
| Sunday | 10:00am - 12:00am |

Thai Elephant Milperra

5/6 Bullecourt Avenue, Milperra
(02) 9792 6191
menulog.com.au

Restaurant
Dine-in • Takeaway • Delivery

| | |
|-----------|------------------|
| Monday | 11:00am - 3:00pm |
| Tuesday | 11:00am - 9:30pm |
| Wednesday | 11:00am - 9:30pm |
| Thursday | 11:00am - 9:30pm |
| Friday | 11:00am - 9:30pm |
| Saturday | 5:00pm - 9:30pm |
| Sunday | 5:00pm - 9:30pm |

Elements Bar and Grill

217 Ramsay Street, Haberfield
1300 353 636
elementsbarandgrill.com.au

Bar & Grill
Dine-in • Kerbside Pickup

| | |
|-----------|------------------|
| Monday | Closed |
| Tuesday | 5:30pm - 10:00pm |
| Wednesday | 5:30pm - 10:00pm |
| Thursday | 5:30pm - 10:00pm |
| Friday | 5:30pm - 11:00pm |
| Saturday | 5:30pm - 11:00pm |
| Sunday | 5:30pm - 10:00pm |

Milperra Pizza and Pasta

9/48 Amiens Avenue, Milperra
(02) 9774 5777

Takeaway Restaurant
Dine-in • Takeaway • Delivery

| | |
|-----------|-----------------|
| Monday | Closed |
| Tuesday | 4:00pm - 9:00pm |
| Wednesday | 4:00pm - 9:00pm |
| Thursday | 4:00pm - 9:00pm |
| Friday | 4:00pm - 9:00pm |
| Saturday | 4:00pm - 9:00pm |
| Sunday | 4:00pm - 9:00pm |

Daily Garden Chinese Milperra

1/120 Ashford Avenue, Milperra
(02) 9792 6060
restaurantguru.com

Chinese Restaurant
Dine-in • Takeaway

| | |
|-----------|-----------------------------------|
| Monday | 10:30am - 3:00pm, 4:30pm - 9:00pm |
| Tuesday | 10:30am - 3:00pm, 4:30pm - 9:00pm |
| Wednesday | 10:30am - 3:00pm, 4:30pm - 9:00pm |
| Thursday | 10:30am - 3:00pm, 4:30pm - 9:00pm |
| Friday | 10:30am - 3:00pm, 4:30pm - 9:00pm |
| Saturday | 4:30pm - 9:30pm |
| Sunday | Closed |

Shopping

Market Plaza

20 Ernest Avenue, Chipping Norton
1300 733 454

| | |
|-----------|------------------|
| Monday | 7:00am - 10:00pm |
| Tuesday | 7:00am - 10:00pm |
| Wednesday | 7:00am - 10:00pm |
| Thursday | 7:00am - 10:00pm |
| Friday | 7:00am - 10:00pm |
| Saturday | 8:00am - 10:00pm |
| Sunday | 8:00am - 10:00pm |

Westfield Miranda Shopping Centre

600 Kingsway, Miranda
(02) 9525 6344

| | |
|-----------|------------------|
| Monday | 9:30am - 6:00pm |
| Tuesday | 9:30am - 6:00pm |
| Wednesday | 9:30am - 6:00pm |
| Thursday | 9:30am - 9:00pm |
| Friday | 9:30am - 6:00pm |
| Saturday | 9:00am - 6:00pm |
| Sunday | 10:00am - 6:00pm |

Bunnings Milperra

347-359 Milperra Road, Bankstown
(02) 8707 6400

| | |
|-----------|-----------------|
| Monday | 6:00am - 9:00pm |
| Tuesday | 6:00am - 9:00pm |
| Wednesday | 6:00am - 9:00pm |
| Thursday | 6:00am - 9:00pm |
| Friday | 6:00am - 9:00pm |
| Saturday | 7:00am - 7:00pm |
| Sunday | 7:00am - 7:00pm |

Local Attractions

Deepwater Park

2A/43 Webster Street, Milperra
(02) 9707 9000

Open 24 hours

Deepwater Park is located on the beautiful Georges River in Milperra and is a great spot for a walk or picnic. In the summer, it is renowned for being an amazing spot for a BBQ.

Aussie Paintball Milperra

2 Maxwell Avenue, Milperra
(02) 9573 1555

Open Monday to Friday 9:00am - 5:00pm, Saturday & Sunday 9:00am - 4:00pm

For the ultimate Sydney paintball experience then look no further than Aussie Paintball Milperra

Sylvan Grove Native Garden

7 Sylvan Grove, Picnic Point
(02) 9707 9400

Open 7:00am - 3:00pm weekdays, Closed weekends

Situated in a pleasant and natural bushland setting, Sylvan Grove Native Garden is a unique haven of natural bushland displayed along a winding bush track.

Car Hire

If you require a car while your vehicle is being repaired,
there are car hire companies nearby.

Europcar Sydney Milperra

299-301 Milperra Road, Milperra
(02) 8707 8500
europcar.com

| | |
|-----------|-----------------|
| Monday | 7:30am - 5:00pm |
| Tuesday | 7:30am - 5:00pm |
| Wednesday | 7:30am - 5:00pm |
| Thursday | 7:30am - 5:00pm |
| Friday | 7:30am - 5:00pm |
| Saturday | 8:00am - 1:00pm |
| Sunday | 9:00am - 1:00pm |

Thank you for visiting Daimler Trucks Milperra

We hope to see you again soon

